

Mid Atlantic Ag

Sample 598-072123-043

High Potency Hemp (THCa Dominant) - RS-11

Batch/Lot # RS.0723

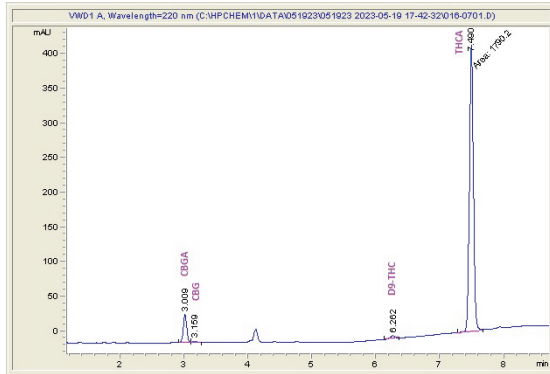
Sample Submitted: 07-19-2023; Report Date: 07-21-2023

High Potency Hemp (THCa Dominant) - RS 11

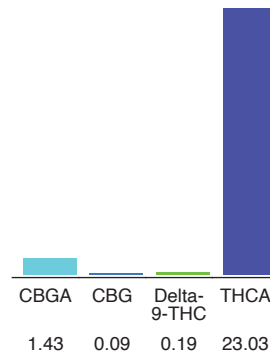
Plant Material: Flower

Batch/Lot # RS.0723

Chromatogram



Cannabinoid Profile



Cannabinoid Profile by HPLC

0.19%
Delta-9-THC

0.00%
CBD

24.74%
Total Cannabinoids

Cannabinoid	% wt	mg/g
CBGA	1.43	14.3
CBG	0.09	0.9
Delta-9-THC	0.19	1.9
THCA	23.03	230.3
Total Cannabinoids	24.74	247.4

Marin Analytics, LLC
250 Bel Marin Keys Blvd, Suite D4
Novato, CA 94949

833-321-TEST / info@marinanalytics.com

Sara Biancalana
Chief Scientist

This sample has been tested by Marin Analytics, LLC using valid testing methodologies and a quality system. Values reported relate only to the sample tested. Marin Analytics, LLC makes no claims as to the efficacy, safety, or other risks associated with any detected or non-detected levels of any compounds reported herein. This Certificate shall not be reproduced except in full without the written approval of Marin Analytics, LLC. Copyright 2023 Marin Analytics, LLC All Rights Reserved.